

Discussion

Date Issued: 06-20-2022

Activate TOPS Davis	Day 1-3 No	Day 4-6 No	Day 7-10 No	Activate TOPS Casey	Day 1-3 No	Day 4-6 No	Day 7-10 Weak	Activate TOPS McMurdo	Day 1-3 No	Day 4-6 No	Day 7-10 No	Activate TOPS Palmer	Day 1-3 No	Day 4-6 No	Day 7-10 No
-------------------------------	---------------	---------------	----------------	-------------------------------	---------------	---------------	------------------	---------------------------------	---------------	---------------	----------------	--------------------------------	---------------	---------------	----------------

Tue +24hr

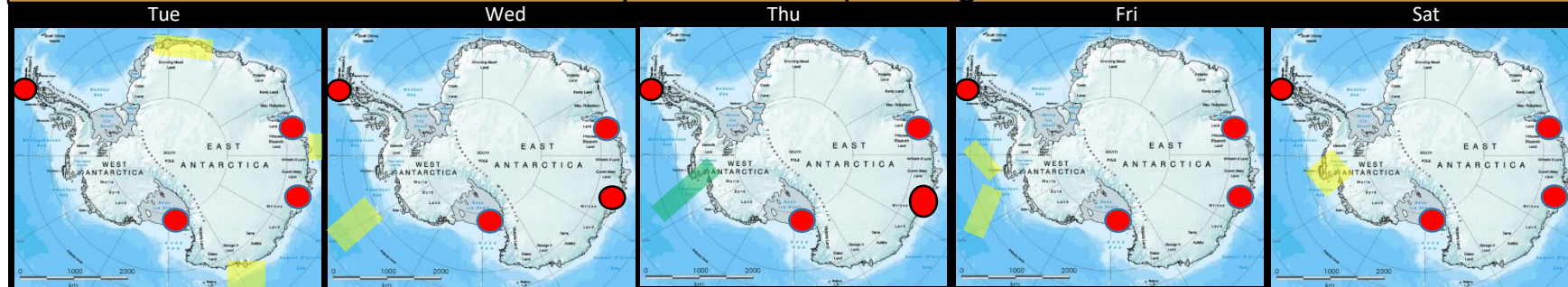
Thu 00z

Sat +120hr

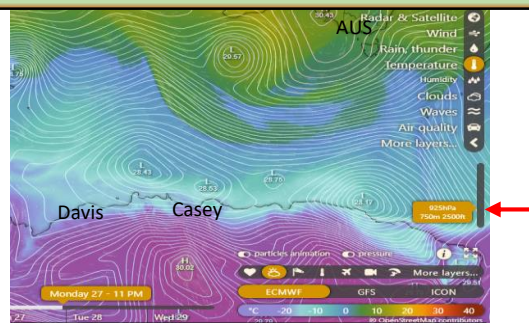
Elongated upper level troughs in each oceanic region is limiting AR's from approaching Antarctica. A jet approaching the Amundsen Sea will be the only significant region over the next 6 day period and all Stations will be void of significant AR activity.

- Davis > Casey Station – A weak AR will diminish today over Davis Station and no other activity expected through the week.
- Ross Sea – A weak AR will approach Dumont D'Urville Station peaking on Tuesday and rapidly moving ENE across the Ross Sea. No additional AR's expected.
- Antarctic Peninsula – High pressure center off South America extending into the Bellingshausen Sea is preventing any AR's through the period. The high will break down late Saturday allowing migratory lows to advance.

6 Day Predicted Impact Regions



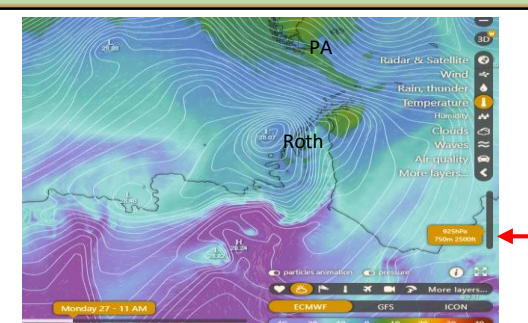
Best Guess for 10 Day Outlook



Princess E.-Wilkes Land 27 Jun



George V - M. Byrd Land 28 Jun



Antarctic Peninsula 27 Jun

Extended Outlook:

Davis – Casey: A pair of decaying waves will skirt the coastline with the most significant impact near Casey next Monday.

Ross Island area: Frontal system over George V Land will have a limited southerly advance as the jet max moves ahead of the system dragging it northward across the Ross Sea.

Palmer area: A frontal system will lay across the west coast from the Bellingshausen Sea on Sunday bringing in a weak AR impacting the Northern extent of the Peninsula.