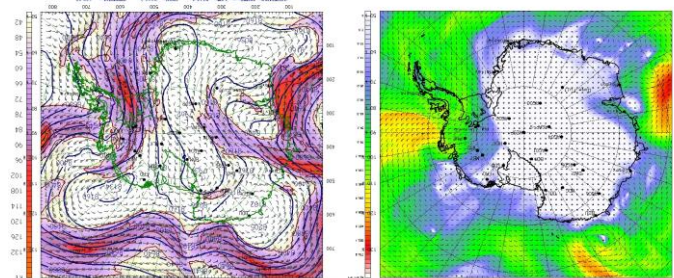


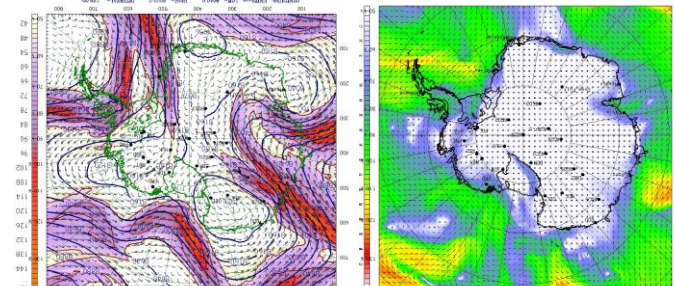
Discussion

Date Issued: 07-14-2022

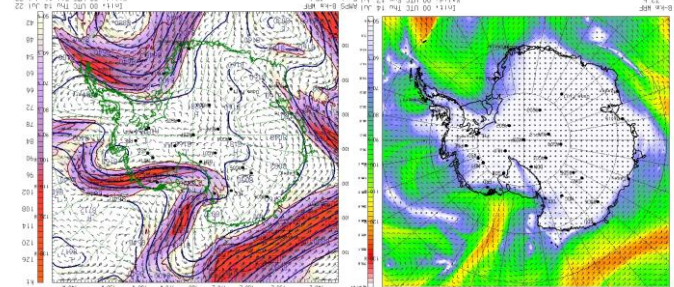
Activate TOPS Davis Day 1-3: Yes (Green) Day 4-6: No (Red) Day 7-10: No (Red)	Activate TOPS Casey Day 1-3: Weak (Yellow) Day 4-6: No (Red) Day 7-10: No (Red)	Activate TOPS McMurdo Day 1-3: No (Red) Day 4-6: No (Red) Day 7-10: Yes (Green)	Activate TOPS Palmer Day 1-3: Yes (Green) Day 4-6: Weak (Yellow) Day 7-10: Weak (Yellow)
--	--	--	---



Fri +24hr



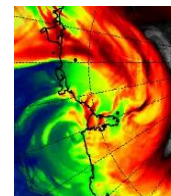
Sun +72hr



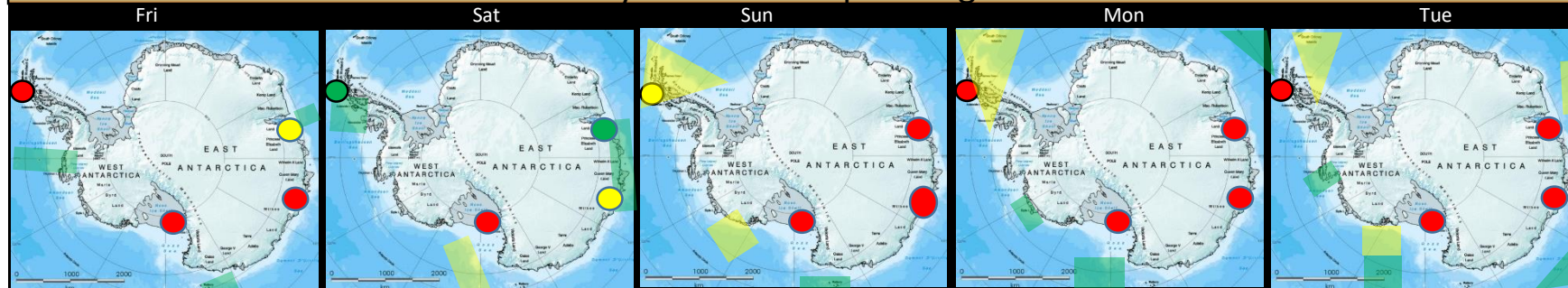
Tue +120hr

The reduction to the four spoke upper level pattern is providing greater meridional flow by Sunday. Jet max's will bring flows into the Peninsula, East Antarctica, and a significant flow from New Zealand to the Ross Sea is expected to drive a measurable AR's next week.

- System approaching Davis and Casey is expected to be marginal for AR measures but the temperature and extent showing on Saturday AMPS IR product may make this more significant over Davis and possibly extending over Casey. This system will quickly fill as the Jet support moves off continent.
- The Jet winds will push southward out of the Indian Ocean around an upper level low centered over George V Land. This upper level Low will be forced north as support over Davis and Casey exits the continent early next week. The two major waves will deepen the low and provide a path from New Zealand toward Ross Island by early next week.
- A migrating wave moving across the Bellingshausen Sea will provide an AR over the area by Sunday. This flow will remain in the area but weaken over time.



6 Day Predicted Impact Regions



Best Guess for 10 Day Outlook (products display not available)

No AR's expected

Princess E.–Wilkes Land

EC all levels and elements w/SFC Press
07/20/2022 00Z

George V – M. Byrd Land

EC PCPN and 925hPa temps w/SFC Press
07/20/2022

Antarctic Peninsula

Extended Outlook:
Davis – Casey: Major wave into the Ross Sea hampers activity over this region during this extended outlook period. No AR activity expected.

Ross Island area: Stand by Ross Island! ECMWF and GFS are coming into agreement today for a major depression moving into the Ross Ice Shelf. This appears practical with significant moisture, extreme winds and a 20C temperature rise through the mid to end of next week.

Palmer area: The continued flow from the Pacific into the Weddell will have a weak AR move through the Drake passage as a ridge advances into the Bellingshausen Mid-week..