

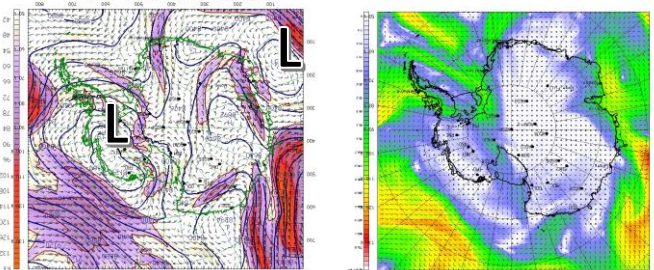
# Discussion

Date Issued: 06-09-2022

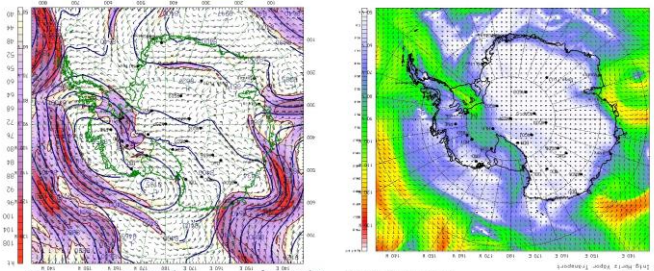
Activate TOPS <b>Davis</b> Day 1-3 Day 4-6 Day 7-10	<span style="color: yellow;">●</span> Weak <span style="color: green;">●</span> Yes <span style="color: red;">●</span> No	Activate TOPS <b>Casey</b> Day 1-3 Day 4-6 Day 7-10	<span style="color: yellow;">●</span> Weak <span style="color: red;">●</span> No <span style="color: red;">●</span> No	Activate TOPS <b>McMurdo</b> Day 1-3 Day 4-6 Day 7-10	<span style="color: red;">●</span> No <span style="color: yellow;">●</span> Weak <span style="color: yellow;">●</span> Weak	Activate TOPS <b>Palmer</b> Day 1-3 Day 4-6 Day 7-10	<span style="color: green;">●</span> Yes <span style="color: red;">●</span> No <span style="color: red;">●</span> No
---	---	---	--	---	---	--	--

The dominate upper level lows over East and West Antarctica will continue to direct inland advances over the Thiel Mts. on the West and over Princess Elizabeth Land on the East.

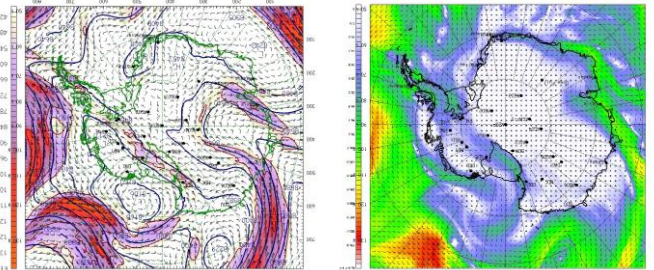
- Most of the AR energy is directed into the Weddell Sea around the North tip of Graham Land with the exception of a well supported shortwave passing over most of the Peninsula on Friday, briefly bringing an AR southward over most of the region.
- A low deepening in the Ross Sea by next week will assist in generating additional support to sustain and feed the AR's in the Ross Ice Shelf through Monday. The Ross Sea Low will also periodically provide enough westward push to impact Ross Island and area's north.
- The continued progression of decaying waves will produce AR's over Davis Station into next week directed by the upper level steering flow around the depression in the South Atlantic. After Saturday, Casey Station will stay east of these advances.



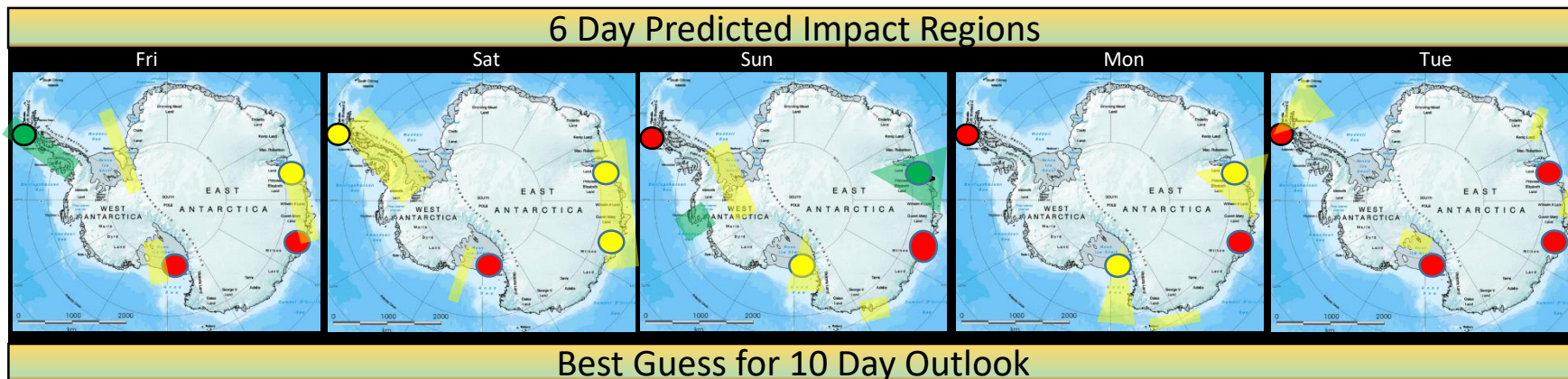
Fri +24hr



Sun +72hr



Tue +120hr

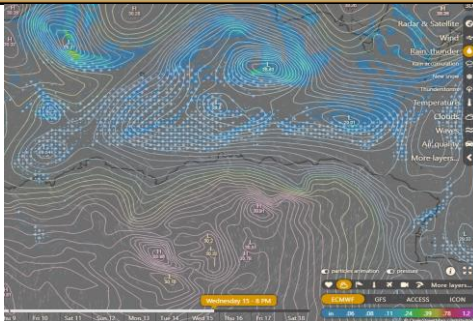


**Extended Outlook:**

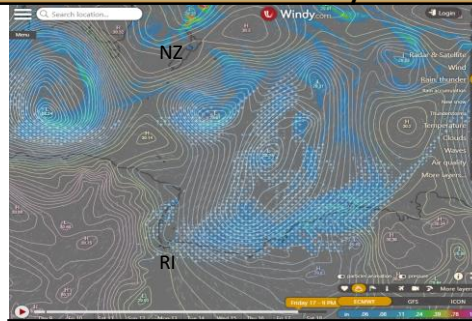
**Davis – Casey:** After Tuesday all AR's are expected to skirt the coastline through this outlook period.

**Ross Island area:** Weak/modified AR will extend along the Transantarctic's through the period with best event impacting Ross Island and area's north on Friday during this forecast period.

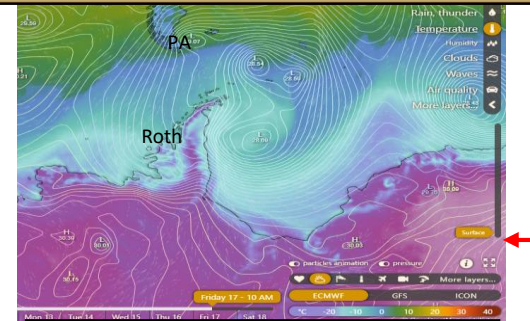
**Palmer area:** A very minor AR will pass on Tuesday with no additional events expected as the flow pushes cyclones through the Drake Passage gathering in the Weddell Sea



Princess E.-Wilkes Land 15 Jun



George V - M. Byrd Land 17 Jun



Antarctic Peninsula 17 Jun