

Discussion

Date Issued: 06-16-2022

Activate TOPS Davis	Day 1-3 Day 4-6 Day 7-10	No Weak No	Activate TOPS Casey	Day 1-3 Day 4-6 Day 7-10	Weak No No	Activate TOPS McMurdo	Day 1-3 Day 4-6 Day 7-10	Weak No No	Activate TOPS Palmer	Day 1-3 Day 4-6 Day 7-10	No Weak No
-------------------------------	--------------------------------	------------------	-------------------------------	--------------------------------	------------------	---------------------------------	--------------------------------	------------------	--------------------------------	--------------------------------	------------------

Upper level circulations dominating the regions include the High over East Antarctica which is weakening over this period; The cyclonic circulation expanding from the Weddell Sea, both South and East which will provide weak but extensive flows into East Antarctica, while the Southern extent will unite with the depression in the Ross Sea. The Ross Sea system will migrate into the Amundsen Sea where it stalls against a persistent High along the Chilean Coast this weekend.

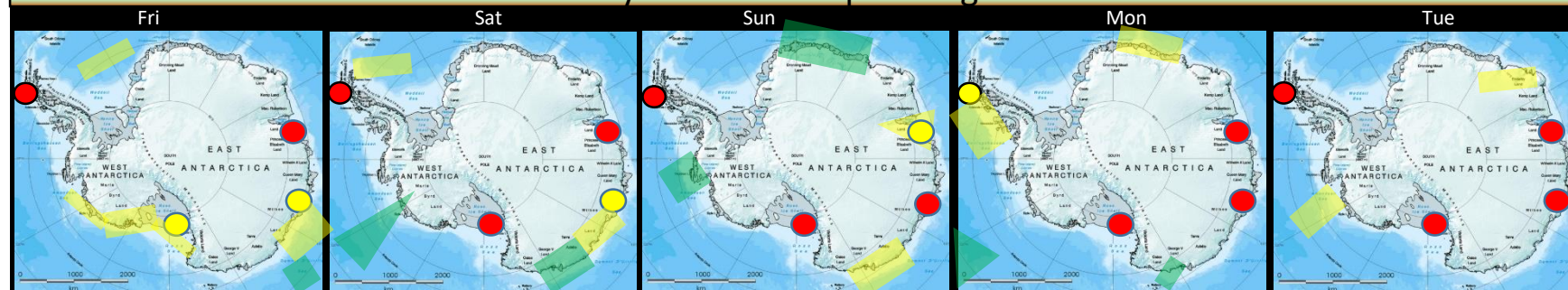
- The migrating system in the Indian Ocean is expected to impact Casey Station as the low decays near their coastline. The main AR will stall just off DDU. Davis Station will have a decaying wave with little AR measures on Sunday as the system passes.
- Low centered in the Ross Sea will move north and be entrained into the frontal boundary in the South Pacific. Off continent flow will replace and follow the cyclone as it progresses north and the AR advances toward DDU to the west.
- The AR that will move into west Antarctica will slide eastward through the weekend and produce a weak AR response on Monday.

Fri +24hr

Sun +72hr

Tue +120hr

6 Day Predicted Impact Regions



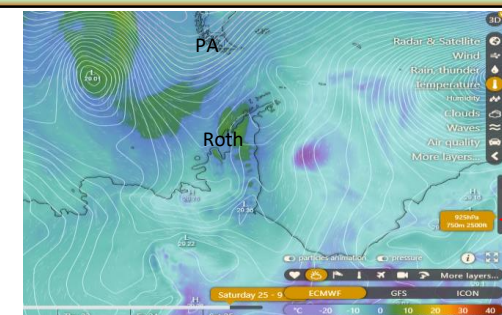
Best Guess for 10 Day Outlook



Princess E.-Wilkes Land 24 Jun



George V - M. Byrd Land 24 Jun



Antarctic Peninsula 25 Jun

Extended Outlook:

Davis – Casey: Due to the blockage of the Drake Passage the flow will weaken driving systems north. No AR's are expected during this period east of Princess Elizabeth Land.

Ross Island area: No clear path for a direct AR exists this period. As cyclones can't pass through the Drake, expect retrograding movement across Marie Byrd Land to stack up with a modified AR across the Ross Ice Shelf Mid to late next week.

Palmer area: The blocking High will break down late next week and allow systems to advance by Saturday.