

Discussion

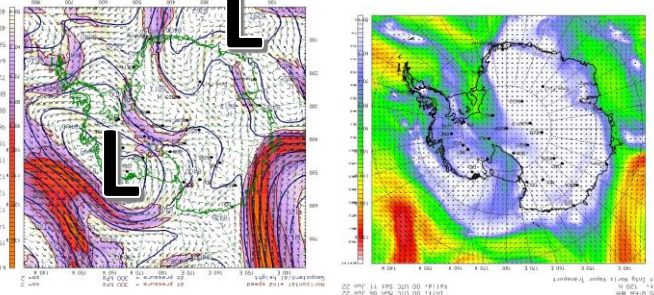
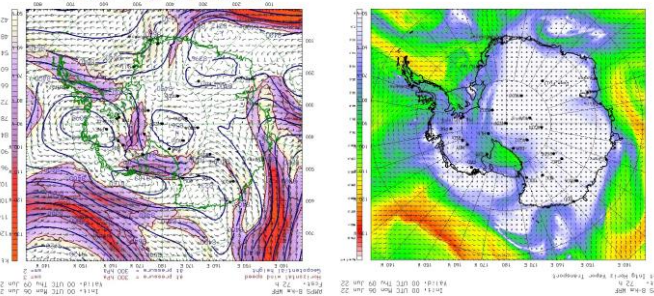
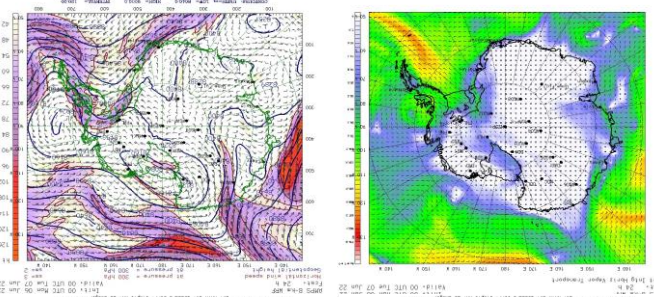
Date Issued: 06-06-2022

Activate TOPS Davis	Day 1-3 ● Yes Day 4-6 ● Yes Day 7-10 ● Weak	Activate TOPS Casey	Day 1-3 ● Weak Day 4-6 ● Yes Day 7-10 ● Weak	Activate TOPS McMurdo	Day 1-3 ● Weak Day 4-6 ● No Day 7-10 ● Weak	Activate TOPS Palmer	Day 1-3 ● Yes Day 4-6 ● Yes Day 7-10 ● No
-------------------------------	---	-------------------------------	--	---------------------------------	---	--------------------------------	--

Tue +24hr

Thu +72hr

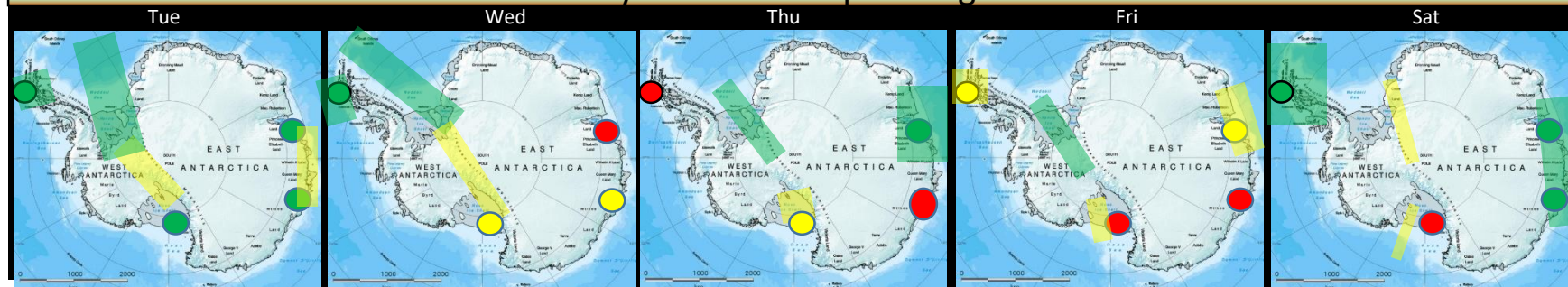
Sat +120hr



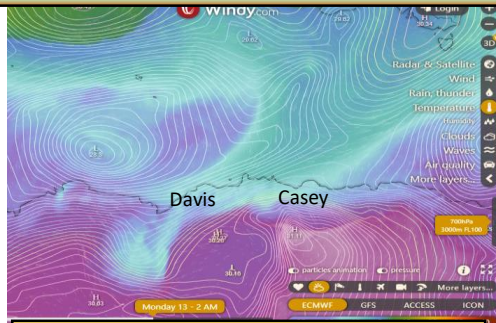
TOPS activities continue for all stations through tomorrow (07 June 12:00 UTC). The 5 spokes on the long wave pattern have turned into a piece of expressionism art work. The pattern is presenting numerous jet maxima circling around two major depressions setting up on each side of the continent. The ridging between these upper level lows are providing inlets for AR's over West Antarctica and along the coast of East Antarctica.

- The peninsula's Graham Land will see a continuous series of AR's moving over the area following the flow into the Weddell Sea with a Max intrusion this week on Friday before the flow breaks over the weekend.
- A finger of the jet will support a short wave moving from the Weddell Sea into the Ross Ice Shelf this week. The AR will move over Ross Island tomorrow. The flow across West Antarctica is cut off by the weekend but the shift in the upper levels will allow a migration of a decaying lows into the Ross Sea next week.
- A series of AR's will be moving along the coastline from Kemp Land to Wilkes Land throughout the week with jet support of +100kts ridging over the region could yield a better than projected event over the weekend.

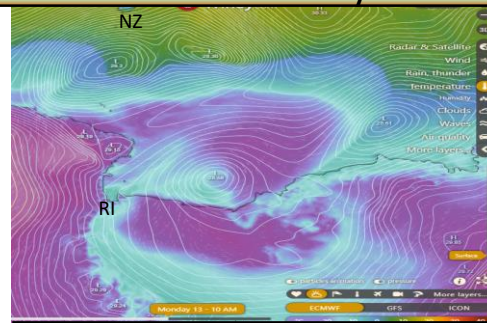
6 Day Predicted Impact Regions



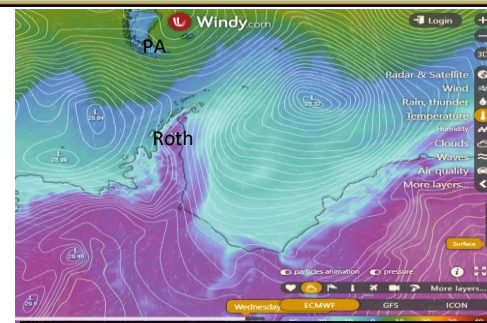
Best Guess for 10 Day Outlook



Princess E.-Wilkes Land 13 Jun



George V - M. Byrd Land 13 Jun



Antarctic Peninsula 15 Jun

Extended Outlook:

Davis – Casey: The migrating waves next week maximize their impact in this region on Monday. This system will have a slight intrusion inland through the period.

Ross Island area: As the trans-continent AR subsides, it sets up an opportunity for a cyclone to retrograde into the Ross Sea and force an AR across Marie Byrd land into the Ross Island region early next week.

Palmer area: This period will be relatively quiet as the flow refocuses AR's into Coats Land. A decaying wave has potential late in this period to advance an AR by mid next week.